



HYATT CENTRIC™

MILANO CENTRALE

Via Giovanni Battista Pirelli, 20
20124 Milano, Italia
T: +39 (0)2 89891234 | F: +39 (0)2 37921235

hyattcentricmilancentrale.com

ACCOMMODATIONS

- 141 guestrooms, including 2 Deluxe Suites, 5 Premium Suites, 5 King Suites, 4 Terrace Suites and 1 Skyline Suite
- Each guestroom and suite is stylishly decorated, featuring custom-designed furniture and wooden parquet flooring
- Complimentary WiFi
- In-room refrigerator
- Coffeemaker with complimentary coffee and tea
- Full BeeKind® bath amenities
- Pet-friendly

SERVICES & FACILITIES

- In-room dining available
- Complimentary WiFi in public areas
- Business centre available 24 hours
- Parking facilities (additional fee)
- Laundry / dry cleaning services available

RECREATIONAL FACILITIES

- **Fitness Centre** — This complimentary 24-hour health club is equipped with cutting-edge Technogym equipment for fitness lovers and for all those who want to stay in shape.
- **Wellness Area** — Featuring a scenic Roman bath with Jacuzzi and water games, where you can relax and enjoy in a dreamy atmosphere with a starry vault, sauna, Turkish bath, salt cave, sensory showers and a relaxation room with a herbal tea corner to complement the wellness route. Access reserved to hotel guests only (additional fee).

RESTAURANT, BAR & LOUNGE

- **Café** — With its contemporary design and elegant, relaxing atmosphere, it is the ideal location to sip a glass of wine or a cocktail. During spring/summer, thanks to the terrace, it becomes the ideal meeting point for a quick lunch with colleagues or an aperitif accompanied by delicious finger food.
- **Bistrot** — Situated on the fourth floor, it offers guests a unique atmosphere, thanks to the culinary creativity of the chef and the refined interior design. Now a privileged destination of contemporary Milan, the Bistrot is the best location for exclusive dinners because it offers the ideal combination of the city's culinary tradition accompanied by an attentive selection of national and international wines. The Bistrot, with its terrace can also be booked for private events (up to 90 people seated / up to 120 standing).
- **Rooftop** — A breath-taking view of the new Milan and a 360° view of its skyline make the Rooftop one of the best known terraces of the city, but mostly the ideal setting for a traditional Milanese aperitif or for a cocktail under the stars accompanied by live music and DJ sets. It is also a special location for private events and photoshoots (up to 120 standing).

CONFERENCES & BANQUETS

- 250 square meters (6,652 sq ft) of customisable meeting space ideal for business meetings, conferences and corporate events
- Up to 120 guests
- Latest audio and video technology
- Rooftop Bar and Bistrot customisable for high-impact events

LOCATION

Centrally located and the ideal departure point for discovering Milan, a vibrant and international city known just as much for its nightlife, fashion and design as for its historic buildings and their secret courtyards. The hotel offers an unexpected and unusual view of the city: from its terraces, you can experience Milan from above in a location which merges business and wellness with sober elegance.

VISITOR INFORMATION

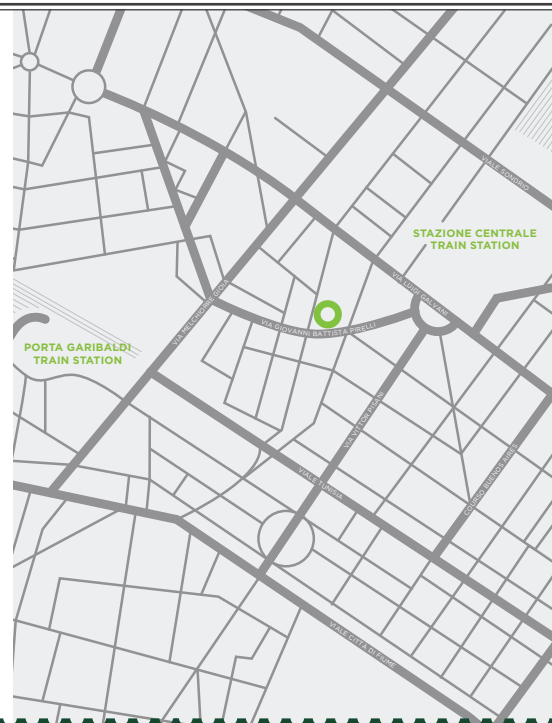
- Language: Italian
- Currency: Euro
- Climate: Moderately continental, with cold, damp winters and hot, muggy summers
- Visa: Please refer to your local travel consultant prior to travel

TRANSPORTATION

- 5-minute walk from the Stazione Centrale and Porta Garibaldi train stations
- 20-minute drive to Milano Linate Airport
- 50-minute drive to Milano Malpensa Airport

POINTS OF INTEREST

- Duomo
- Galleria Vittorio Emanuele
- Castello Sforzesco
- Last Supper
- Pinacoteca di Brera
- Palazzo Reale
- Museo del Novecento
- Teatro alla Scala
- Basilica di Sant'Ambrogio
- Piazza Gae Aulenti
- Fashion District
- Navigli





CAPACITY CHART

Room Name	Dimensions (L x W x H)	Room Size	Crescent Square	U-Shape	Hollow Square	Boardroom	Class Room	Theater	Reception
1ST BASEMENT									
Porta Venezia-Garibaldi-Ticinese	23 x 5,15 x 3,05 m 75,45 x 16,89 x 10 ft	112 sq m 1507 sq ft	42	50	50	50	44	120	100
Porta Ticinese-Garibaldi	17,35 x 5,15 x 3,05 m 56,92 x 16,89 x 10 ft	90 sq m 968,75 sq ft	30	38	38	38	36	72	70
Porta Venezia-Garibaldi	15,3 x 5,15 x 3,05 m 50,19 x 16,89 x 10 ft	80 sq m 861,11 sq ft	30	36	36	36	32	66	65
Porta Ticinese	7,7 x 5,15 x 3,05 m 25,26 x 16,89 x 10 ft	32 sq m 344,44 sq ft	-	12	12	12	12	16	25
Porta Garibaldi	9,65 x 5,15 x 3,05 m 31,66 x 16,89 x 10 ft	50 sq m 538,19 sq ft	12	20	20	20	16	40	35
Porta Venezia	18,53 x 16,89 x 3,05 m 5,65 x 5,15 x 10 ft	30 sq m 322,91 sq ft	-	10	10	12	-	10	20
Porta Vigentina-Romana	20,65 x 3,80 x 3,15 m 67,74 x 12,46 x 10,33 ft	78 sq m 839,58 sq ft	24	-	-	44	32	52	50
Porta Romana	13,30 x 3,80 x 3,15 m 43,63 x 12,46 x 10,33 ft	55 sq m 538,19 sq ft	12	-	-	24	20	40	30
Porta Vigentina	7,35 x 3,80 x 3,15 m 24,11 x 12,46 x 10,33 ft	28 sq m 301,38 sq ft	-	-	-	14	-	12	18
Porta Magenta	5,60 x 6,25 x 3,15 m 18,37 x 20,50 x 10,33 ft	34 sq m 365,97 sq ft	-	12	-	12	8	30	25

Room Name	Room Size	Reception	Seated
-----------	-----------	-----------	--------

4TH FLOOR

Bistrot	168 sq m 1808 sq ft	120	90
---------	------------------------	-----	----

13TH FLOOR

Rooftop	200 sq m 2152 sq ft	120	-
---------	------------------------	-----	---

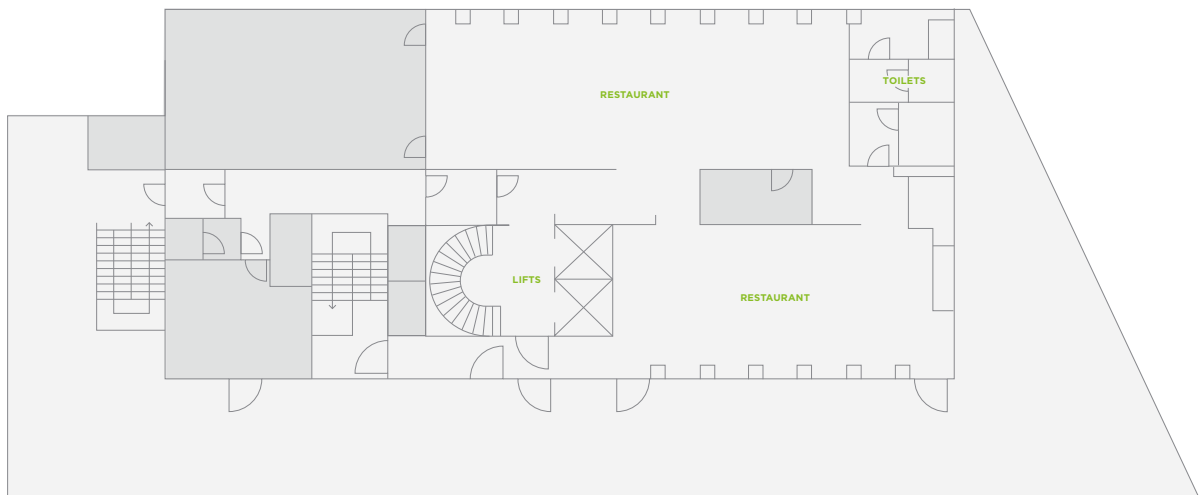


FLOOR PLANS

1ST BASEMENT



4TH FLOOR



13TH FLOOR

